

GOOSKY

S2

快速使用指南

GOO-SKY.COM

S2

Quick Start Guide

免责声明

- 本产品并非玩具,不适合未满 14 岁的人士使用。
请勿让儿童接触 S2,在有儿童出现的场景操作时请务必特别小心注意。
- 本产品是一款竞技直升机,在电源正常工作及各部件未损坏的情况下将提供轻松自如的飞行体验。
- 请务必在使用产品之前仔细阅读本文档和产品说明书、遥控器说明书,了解您的合法权益、责任和安全说明;否则,可能带来财产损失、安全事故和人身安全隐患。一旦使用本产品,即视为您已理解、认可和接受本文档全部条款和内容。使用者承诺对自己的行为 及因此而产生的所有后果负责。
- GOOSKY 不承担因用户未按本指引、产品说明书、遥控器说明书使用产品引发的一切损失。
- 在遵从法律法规的情况下,GOOSKY 享有对本文档的最终解释权。

Disclaimer statement

- This product is not a toy and is not intended for use by persons under the age of 14. Do not let children touch the S2, and be very careful when operating in a scene where children are present.

- This product is a competitive helicopter, which will provide a relaxed and comfortable flying experience when the power supply is working properly and the components are not damaged.

- Please be sure to read this document, product manual, and transmitter manual carefully before using the product to understand your legal rights, responsibilities and safety instructions. Otherwise, it may cause property damage, safety accidents and personal safety hazards. Once you use this product, you are deemed to have understood, recognized and accepted all the terms and content of this document. The user undertakes to be responsible for his own actions and all consequences arising therefrom.

- GOOSKY shall not be liable for all losses caused by the user's failure to use the product in accordance with this guideline, product manual, and remote control manual.

- In compliance with laws and regulations, GOOSKY has the final right to interpret this document.

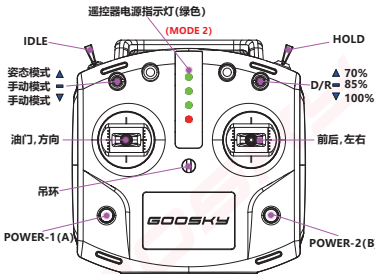
注意事项

- S2 特技直升机具有一定的危险性,操作前一定要详细阅读使用指南或说明书,确保使用安全,以免误伤自己或者他人。
- 请在空旷的室外环境飞行,并远离人群。
- 请远离高压架或者高压线等设备,避免电磁干扰。
- 飞行前注意检查遥控器和飞机电池电量,确保设备有电。
- 使用前一定要将电池充满电,然后再飞行。

Precautions

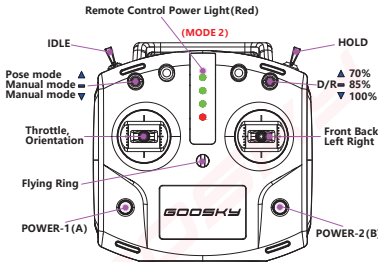
- S2 aerobatic helicopter has certain dangers. Before operation, be sure to read the guide or instruction to ensure the safety of use, so as not to accidentally injure yourself or others.
- Please fly in an open outdoor environment and away from crowds.
- Please keep away from high-tension towers or high-voltage cables to avoid electromagnetic interference.
- Before flying, check the amount of the power of the remote control and the helicopter to ensure that the equipment is powered.
- Be sure to fully charge the battery before using it, then flying.

遥控器功能介绍



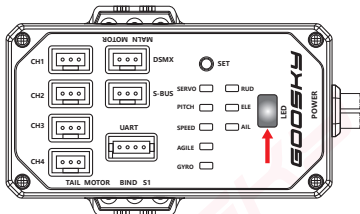
注：图示是 MODE2 左手油门遥控器

Introduction to the functions of the remote control



Note: The picture shows the MODE-2 (left-hand throttle) remote control

飞控灯语介绍



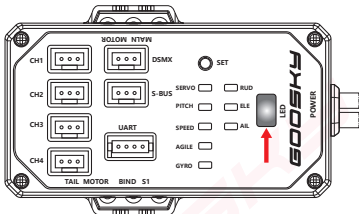
飞控 LED 指示灯灯语介绍

蓝灯慢闪	没有对频
蓝灯常亮	对频成功
红灯常亮	姿态模式
红灯闪烁	手动模式
绿灯常亮	关闭姿态模式

APP 与飞控链接状态灯语

蓝灯快闪	安卓 APP 连接成功
蓝灯常亮	苹果 APP 连接成功

Introduction to indicator light of flight control



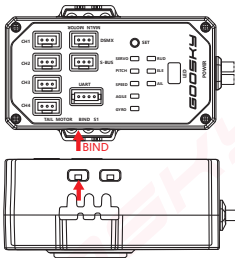
Introduction to LED indicator light of flight control

Blue light flashes slowly	No binding
Blue light stays on	Binding success
Red light stays on	Pose mode
Red light flashing	Manual mode
Green light stays on	Turn off pose mode

Link status indicator between APP and flight control

Blue light flashes quickly	Android APP connected successfully
Blue light stays on	IOS APP connected successfully

飞控对频介绍

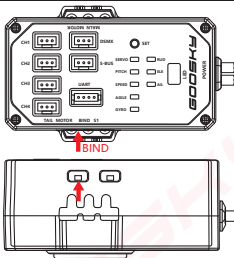


打开 GOOSKY T8 遥控器,飞机上电连按 3 次(BIND)按键等蓝灯快闪,遥控器靠近飞控小于 1 米距离,蓝灯常亮飞控通过自检,对频完成;

打开 Futaba 遥控器,将通信协议调整到 (S-FHSS),飞机上电长按(BIND)按键等蓝灯快闪,遥控器靠近飞控小于 1 米距离,蓝灯常亮飞控通过自检,对频完成;

注意: 飞机通电前一定要先将主桨支架取下来。

Introduction to flight control bind

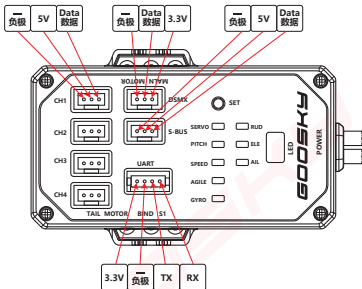


Turn on the GOOSKY T8 transmitter, press the BIND button for 3 times after the helicopter is powered on. The blue light flashes quickly. Keep the transmitter less than one meter away from the flight control. The flight control passes self-detection when the blue light is solid on. Then the binding is done.

Turn on the Futaba transmitter, adjust the communication protocol to (S-FHSS). Press and hold the BIND button when the helicopter is powered on, the blue light flashes quickly then. Keep the transmitter less than one meter away from the flight control. The flight control passes self-detection when the blue light is solid on. Then the binding is done.

Note: The main blades must be disassembled before the helicopter is powered on.

飞控接口介绍



1、CH1-CH2-CH3-CH4：舵机接口。

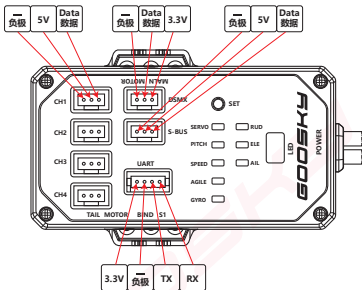
2、DSMX：支持 dsm2、dsm、dsmx, 接口使用 HX1.5mm 间距 3P 插头。

3、S-BUS：支持 S-BUS, ppm, 接口使用 JST 1.25mm 间距 3P 插头。

4、UART：蓝牙接口。

注意：飞控详细功能介绍,请到官网 - 服务与支持,下载飞控设定说明书,查看详细介绍。

Introduction of flight control interface



- 1、CH1-CH2-CH3-CH4: Servo interface.
- 2、DSMX: Support dsm2, dsm, dsmx, the interface uses HX1.5mm pitch 3P plug.
- 3、S-BUS: Support S-BUS, ppm, the interface uses JS T 1.25mm, pitch 3P plug.
- 4、UART: Bluetooth interface.

Note: For the detailed function introduction of the flight control, please go to the official website > Service and Support, and download the flight control setting manual to view the detailed introduction.

其他品牌遥控器与S2连接、设置流程

注意：为了安全,建议拆掉直升机主桨、尾桨

- 1、接收机插入飞控接收机接口,并与遥控器对频
- 2、遥控器新建模型
- 3、选择直升机
- 4、选择斜盘类型 H-1
- 5、设定油门锁定
- 6、设定 5 通道,手动、姿态模式开关
- 7、设定油门曲线
- 8、设定螺距曲线
- 9、检查通道反向 (油门)

注意：遥控器参数设定教程,请到官网 - 服务与支持,下载相关说明书,查看详细介绍。

Other brand remote control and S2 connection, setting process

Note: For safety, it is recommended to disassemble the main blades and tail blades of the helicopter

- 1、The receiver is inserted into the flight control receiver interface, and binding with the remote control
- 2、Create a new model in the remote control
- 3、Choose Helicopter
- 4、Select the type of swashplate (H-1)
- 5、Set throttle lock
- 6、Set 5 channels, manual, pose mode switch
- 7、Set throttle curve
- 8、Set pitch curve
- 9、Check Channel Reverse (Throttle)

Note: For the remote control parameter setting tutorial, please go to the official website > Service and Support, download the relevant manual, and view the detailed introduction.

官网相关资料介绍

- 1、官网网址: www.GOO-SKY.com.
- 2、官网 - 服务与支持,有产品说明书与各种遥控器设置说明指南、APP 使用指南、飞控使用指南等等。



GOOSKY

Information about the official website

- 1、Website: **www.GOO-SKY.com**.
- 2、Official website > service and support, there are product manuals and various remote control setting instructions, APP usage guidelines, flight control usage guidelines, etc.



GOOSKY

APP下载

- 1、APP 可以通过苹果商城、谷歌商城搜索 GOOSKY 下载、也可以通过 GOOSKY 提供的二维码扫码下载。
- 2、手机下载、使用 GOOSKY APP，需要用户授权相关权限，以免影响使用。



APP Download

- 1、The APP can be downloaded by searching GOOSKY in the App Store or Google Play, or by scanning the QR code provided by GOOSKY.
- 2、To download and use the GOOSKY APP on mobile phones, users need to authorize relevant permissions to avoid affecting the use.



Download on the
App Store



GET IT ON
Google Play

APP使用说明

- 1、苹果手机链接飞机时,连接的蓝牙名称为:
GOOSKY-IOS-xxxxxx,后五位为数字编码,每个蓝牙模块的编码都是唯一的,注意不要连接错误。
- 2、安卓手机链接飞机时,连接的蓝牙名称为:
GOOSKY-Android-xxxxxx,后五位为数字编码,每个蓝牙模块的编码都是唯一的,注意不要连接错误。
- 3、GOOSKY APP 使用说明和调参介绍,请到官网 - 服务与支持,下载 APP 使用说明,查看详细介绍。

APP Instructions for Use

- 1、When iPhone is connected to the helicopter, the connected Bluetooth name is: GOOSKY-IOS-xxxxx, and the last five digits are digital codes. The code of each Bluetooth module is unique. Be careful not to connect incorrectly.
- 2、When Android phone is connected to the helicopter, the connected Bluetooth name is: GOOSKY-Android-xxxxx, and the last five digits are digital codes. The code of each Bluetooth module is unique. Be careful not to connect incorrectly.
- 3、For the GOOSKY APP instruction and parameter adjustment, please go to the official website > Service and Support, download the APP instruction, and view the detailed introduction.